



Village of Kaslo and Area

Snapshot of Child Care Need

Affordable, accessible, and quality child care is an integral element of healthy, sustainable communities and is foundational to early childhood development. The child care availability in Kaslo and area is very low, leaving many families without child care, parents unable to work, perform daily tasks, participate in community and for some, needing to leave the community to find the services they need.

Periwinkle Children's Centre with funding from the Columbia Basin Trust, commissioned this snapshot of child care need for Kaslo and area by CitySpaces Consulting. The purpose is to provide a better picture of the current state of child care and the number of spaces needed in the community.

Although this report is not a full needs assessment, it is the first of its kind in providing a preliminary understanding of child care needs in the community. This study highlights the need for suitable, affordable child care that meets the needs of families and can assist with child care strategic decision-making and funding development.

Further research and a full needs assessment is required in order to have a more robust understanding of child care need. We recommend further engagement with families, child care providers and service providers to better understand the need for child care spaces, for underserved populations, and in order to further refine the targets.

A Summary of this Study

This study was carried out by gathering information from families through an online survey and, as well as statistical data assembled and analyzed to determine the need and demand for child care.

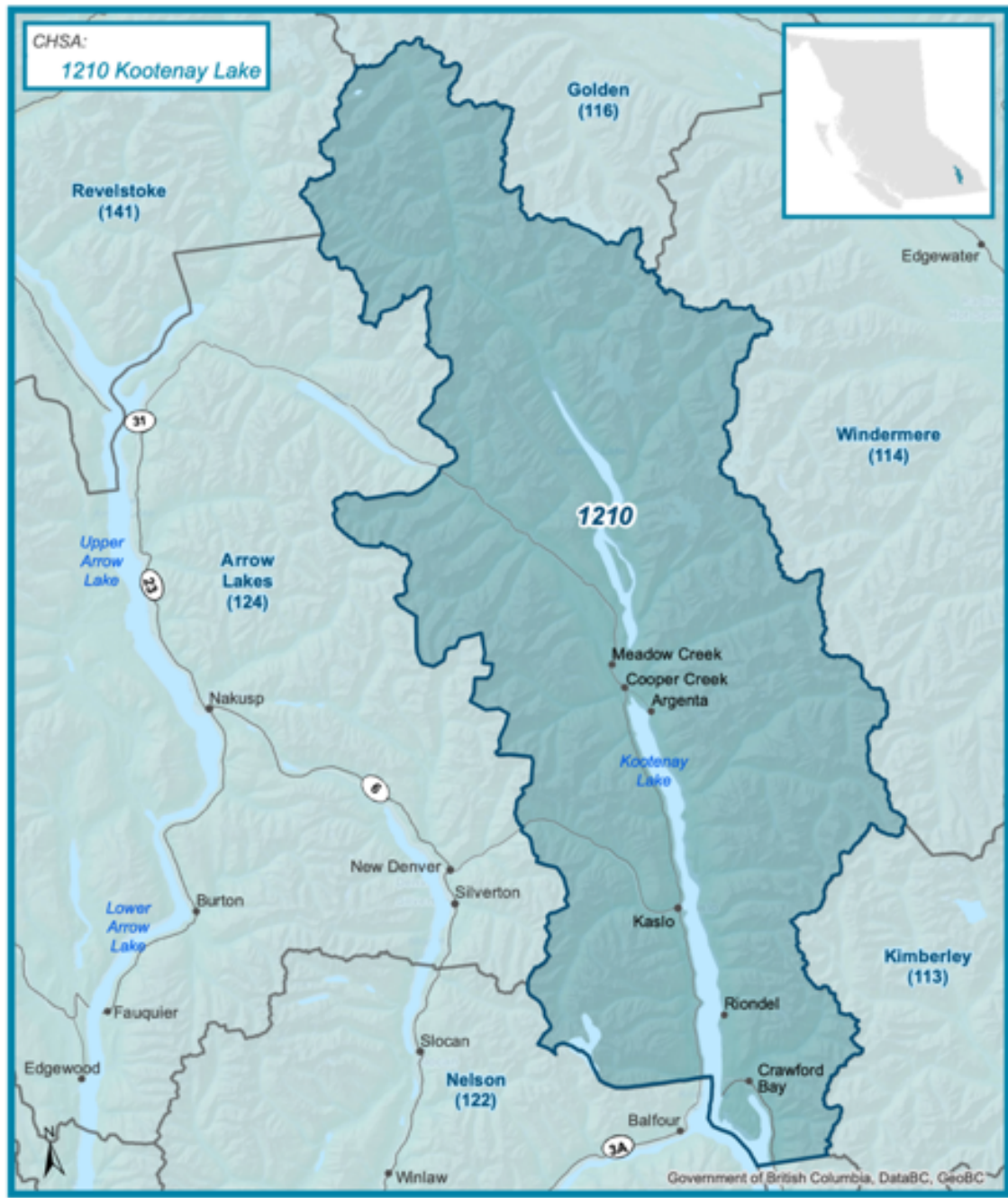
The quantitative data is based on the current and projected population of children and families in both the Village of Kaslo and the surrounding area. The surrounding area is based on the Local Health Area of Kootenay Lake - 121 and the Regional District of Central Kootenay's Electoral Area D. Both population and projection numbers are based on BC Population Projections data, with additional information gathered from the 2016 Census (Age in Single Years Data).

Key findings of this study indicate:

- Although survey respondents said that they appreciate Periwinkle Children's Centre and are grateful for the spaces available, the majority said there is an inadequate supply of child care services in Kaslo and area for their needs. The availability of infant and toddler (ages 0 to-3, years) and ages 3 to 5 care is of particular concern.
- Most families are in need of part -time care, although for parents who are working full -time, finding adequate and affordable child care poses a real problem to them. The high number of low income families makes affordability an important concern.
- There are 12 child care spaces for 250 children between the ages of 0 to 12. The result is a coverage rate of 5%, meaning there is 0.5 spaces for every 10 children.
- Breaking down the coverage rate for the different age groups, it is 0% for under 3 years, 21% for 3 to 5 years and 0% for school age children.

- Moving forward the recommendation is to increase the coverage rate to 55% for 0 to 12-year-old children.
- In order to meet these targets, there needs to be an increase of 125 spaces, 27 spaces for under 3 years, 20 spaces for 3 to 5 years, and 79 spaces for school age children.

Kaslo and surrounding Area



The Survey

A total of 56 parents and guardians, representing 94 children, completed the online survey between April 7th to 19th 2020.

Who Responded

- Most survey respondents have one (52%) or two (30%) children, while a smaller portion had three children (9%), and only a few had 4 children (5%).
- 61% were looking for child care or additional child care, 25% already had child care and 14% did not need child care.
- Most households were couples with children (78%), 20% of households were single parents, and 0% of parents were under 25 years old.
- The majority of parents were employed part-time (42%), followed by stay-at-home parent (33%) and parents employed full time (31%).
- Approximately 26% of families were considered low-income¹. The largest share of households (36%) had annual incomes of \$20,000 - \$40,000, while 20% made \$40,000 - \$60,000, 31% had incomes of over \$60,000, and 13% made under \$20,000, and .31% had incomes of over \$60,000.
- The primary language spoken by families at home is English. 8% of the respondents identified as Indigenous, 4% identified as Francophone and 0% identified as new immigrants or refugees.

The Current Child Care Situation

Of the families with child care, the most common arrangement is group child care for ages 3 to 5 at Periwinkle Children's Centre. Respondents appreciate the education and experience level of staff, the quality and location of care, and ease of transportation to the facility. They are less satisfied with the hours of care, quality of the facility and multicultural programming.

Most respondents have a child in part-time care (64%), while 24% have a child in full-time care.

¹ From the 2016 Canadian Census [measure of low-income](#).

Approximately 50% of respondents pay \$500 or less a month for child care. Most households agree (76%) their child care is affordable, while 24% disagreed or were neutral. Looking at actual monthly child care spending 52% spent 0-\$250; 28% spent \$250-\$500; 8% spent \$500-\$1000; meanwhile, 8% spent more than \$1000. Most respondents received a child care subsidy or benefit. Only 24% did not receive any subsidy (due to not qualifying).

- **“Having Periwinkle in Kaslo is one of the foremost things that gives me pride and faith in the village and it’s future.”**
- **“Periwinkle is a wonderful facility and is in dire need of upgrading.”**
- **“Periwinkle is needed by so many families in Kaslo and is such a wonderful experience for our children. I really hope it becomes accessible to all the families in Kaslo.”**
- **“It is nearly impossible to have full-time work and child in care locally. One of the parents, my wife can only work part time during the hours of periwinkle. We require full time 8-5pm for us to both work.”**

Child Care Needs

The majority of survey respondents (68%) said that there is an inadequate supply of child care services in Kaslo and area for their needs. The challenge in securing suitable care experienced by most households (38%) relates to care being unavailable at the times they need it. The majority of households are looking for infant and toddler care (47%) or 3 to 5-year-old care (67%), while only a small portion are looking for preschool (20%) or school age/out of school care (10%). Drop in, flexible and expanded hours are a common need.

Families are looking for licensed child care with staff who are trained as Early childhood Educators (ECEs).

Many households need care on weekdays from Monday to Friday, with a slightly higher need on Tuesdays and Thursdays. Some have changing needs from week to week, or month to month (27%), while others can be flexible on the days they need care (23%). The survey asked parents if they require child care in the daytime (8:30 am to 2:30pm) and/or in the afternoon (2:30 pm to 4:30 pm). 80% of families answered yes to needing care during the daytime and 53% indicated they need care in the afternoon. Parents want to see outdoor or environmental education and learning (79%) and play based learning (72%) available to their children.

- "It would be wonderful if, in addition to existing mindful programming offered by Periwinkle, there were something with a small number of consistent staff that could offer either drop-in childcare during the day, or pre-arranged but with more flexible timing."
- "I would like to see more childcare in the surrounding areas. Balfour, Harrop/Proctor etc."
- "There needs to be the ability to register children on the days of the week the family requires. At this point only being able to register your child on Mondays and Wednesdays OR Tuesdays and Thursdays doesn't actually meet the needs of families who require childcare for say 3 days a week. I recognize that the IDEAL scenario is to have children grouped together and attending the same days together for continuity (like in a preschool program) but that's an ideal that doesn't always actually meet the childcare needs of working families."

Child Care Needs of Underserved Families

Although there are a few families who would like Indigenous programming, there is low demand for multi-cultural, or Francophone programming. There is a small number of families who require who extra support for children who have special needs and .there is low demand for multi-cultural, or Francophone.

Single parents are in particular need of full-time child care. The ability of single parents to attend work, appointments, run errands or perform daily tasks is affected by a lack of access to care. Most single parents have a budget of \$500 per month for child care, and 60% are spending over that.

Although many single parents and young parents (under the age of 25) are receiving child care subsidies, this is not enough to make up the difference between their ability to pay and the cost. 60% of single parent respondents have \$250 or less per month available in their budget. Only 10% of single parent households currently have child care services meeting their needs.

- **"Child Care is much needed for younger kids, in shorter time frames (kids under 2.5) for single working parents!"**

Challenges Finding Child Care

The primary challenge experienced by respondents in securing suitable child care are services not being available when needed (62%), followed by both a lack of full-time spaces, and the cost being too high for 42% of families. 38% also struggled to find part-time care.

The price of child care is a challenge for most families, who are looking for child care with a budget of \$500 or less. 45% of respondents were currently receiving a child care subsidy, while 14% felt they did not need it and 35% did not qualify.

- **"Having to drive to Nelson daily for childcare for ages 1.5-2.5 is very difficult. It results in hours of commuting and even then, full time care is limited."**
- **"If there isn't a licensed facility that is able to handle the growing need for childcare, it leads to a situation of families having no choice but to leave children with unlicensed, unregulated caregivers who have no special training or education to nurture our children's needs. This is an essential service for our young generation!"**
- **"The unlicensed child care providers outside of Periwinkle Centre, are 12\$ an hour, which can become very expensive throughout the summer months when Periwinkle is closed."**
- **"Younger children have no childcare, making getting back to work more challenging."**

Child Care Space Inventory

Currently, in Kaslo and area, there is only one licensed child care providers. Periwinkle Children’s Centre has 12 spaces for 3 to 5-year-old children and is open Tuesdays, Wednesdays, and Thursdays from 8:30am to 2:30pm daily.

The child care coverage rate is a percentage based on the number of licensed child care spaces available for every 10 children. The child care coverage rate in Kaslo and area is 5%. To put this in context, a child care desert² is considered a coverage rate below 33%, and in 2002 all European Union member states committed to a coverage rate of 90% for children ages 3 to 5 and 33% for those who are under 3 years old³.

Table 1: Current Child Care Coverage Rates

This table shows the current population of children in Kaslo and area from 0 to 12 years old, their access to child care, the child care availability in the community.

Age Group	Number of Children	Number of Child Care Spaces	Current Coverage Rates
Under 3 years	49	0	0%
3 to 5 years	58	12	21%
6 to 12 years	143	0	0%
Total	250	12	5%

Source: BC Population Projections 2019, 2016 Census (Age in Single Years Data)

² The Canadian Centre for Policy Alternatives (CCPA) 2018 report, Child Care Deserts in Canada

³ The European Parliament, Directorate-General for Internal Policies 2013 compilation of briefing notes, Barcelona Targets Revisited

Child Care Space Creation Targets

Space Creation Targets

The child care space creation targets are the number of child care spaces required to adequately address the needs of families in Kaslo and area. The methodology used to determine space creation targets is informed by other child care studies, including the Surrey Child Care Gap Assessment (2011), the Comox Valley Child Care Action Plan (2019) and the Township of Langley Child Care Action Plan (2020). The results from the survey confirm that additional child care spaces are needed, although many families are in need of part time care only.

Based on these sources, the target children for 0 to 12 years is 55%. **To meet these targets, an additional 125 child care spaces are needed** - 27 spaces for under 3 years, 20 spaces for 3 to 5 years and 79 spaces for 6 to 12 years.

Table 2: Targets for Child Care Coverage Rates

This table shows the targets for child coverage rates and how many new child care spaces are required to meet the targets.

Age Group	Number of Children	Target Coverage Rate	Target Child Care Spaces	New Spaces Required to Meet Targets
Under 3 years	49	55%	27	27
3 to 5 years	58	55%	32	20
6 to 12 years	143	55%	79	79
Total	250		137	125

Source: BC Population Projections 2019, 2016 Census (Age in Single Years Data)

Future Child Care Spaces Needed

The tables below show the number of child care spaces needed to meet the target coverage rates for each age group. The total targets spaces and net new spaces required are laid out for the current child care population, projections of what the child care population will be in 5 years and in 10 years.

Table 3: Children Under 3 Years

			Target Coverage Rate of 55%	
Year	Number of Children	Current Child Care Spaces	Target Child Care Spaces	Net New Spaces Required (Total Spaces - Existing Spaces)
2020	49	0	27	27
2025	36		20	20
2030	40		22	22

Source: BC Population Projections 2019, 2016 Census (Age in Single Years Data)

Table 4: Children 3 to 5 Years

			Target Coverage Rate of 55%	
Year	Number of Children	Current Child Care Spaces	Target Child Care Spaces	Net New Spaces Required (Total Spaces - Existing Spaces)
2020	58	12	32	22
2025	41		23	11
2030	40		22	10

Source: BC Population Projections 2019, 2016 Census (Age in Single Years Data)

Table 5: Children 6 to 12 Years

			Target Coverage Rate of 55%	
Year	Number of Children	Current Child Care Spaces	Target Child Care Spaces	Net New Spaces Required (Total Spaces - Existing Spaces)
2020	143	0	79	79
2025	122		67	67
2030	95		52	52

Source: BC Population Projections 2019, 2016 Census (Age in Single Years Data)

Conclusion

This study has found that families living in Kaslo and area are in dire need of additional licensed child care spaces. Part-time, full-time, drop in, flexible and expanded hours are common requirements. There needs to be a continued focus on support for low-income families and single parent households.

Moving forward, the recommendation is to increase the child care coverage rate to 55% for 0 to 12-year-old children. In order to meet these targets, there needs to be an increase of 125 child care spaces are needed - 27 spaces for under 3 years, 20 spaces for 3 to 5 years and 79 spaces for 6 to 12 years